

## Upgrading the 1971 Side Stand Lug

### Summary:

This article covers the procedure of replacing the existing side stand lug on the 1971 Commando with the later version bracket. There are two reasons to upgrade the '71 side stand lug -- the pin on the '71 holding the side stand would break off and the '71 version of the side stand is no longer available. There are bolt-on side stands available that bolt around the frame tube, but these bolt-on stands tend to crimp the frame tube if used improperly. This procedure is normally done when a complete frame up restoration is being performed.



**A picture of the stock side stand lug on a 1971 frame, looking at the bottom of the bracket.**



**A picture of a frame with the new bracket installed.**

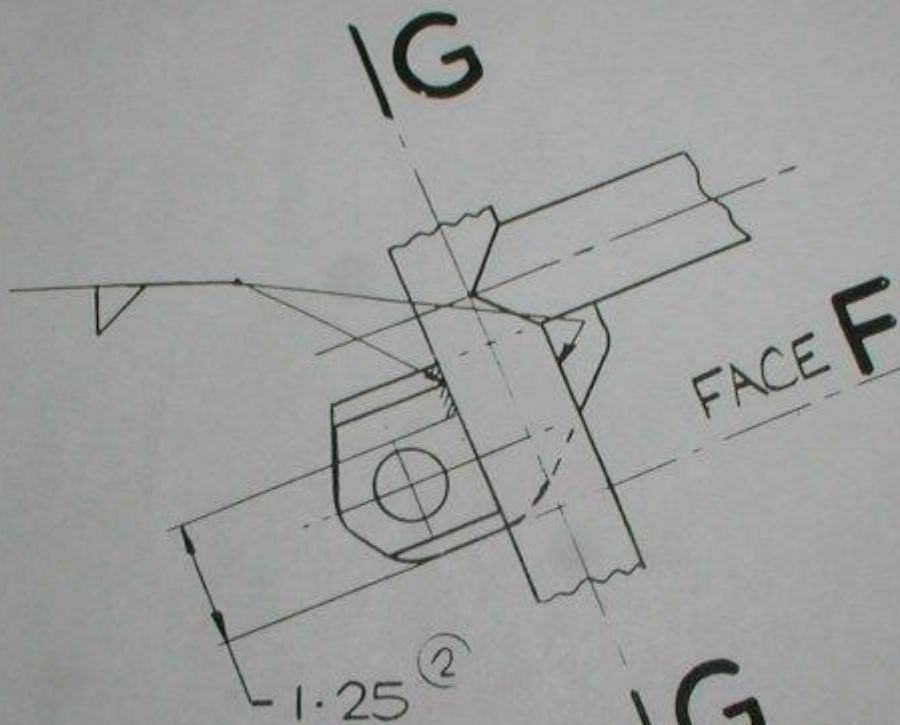
### **Procedure:**

The first step is to remove the old bracket by cutting and grinding off the old bracket, trying not to damage the frame tubes.



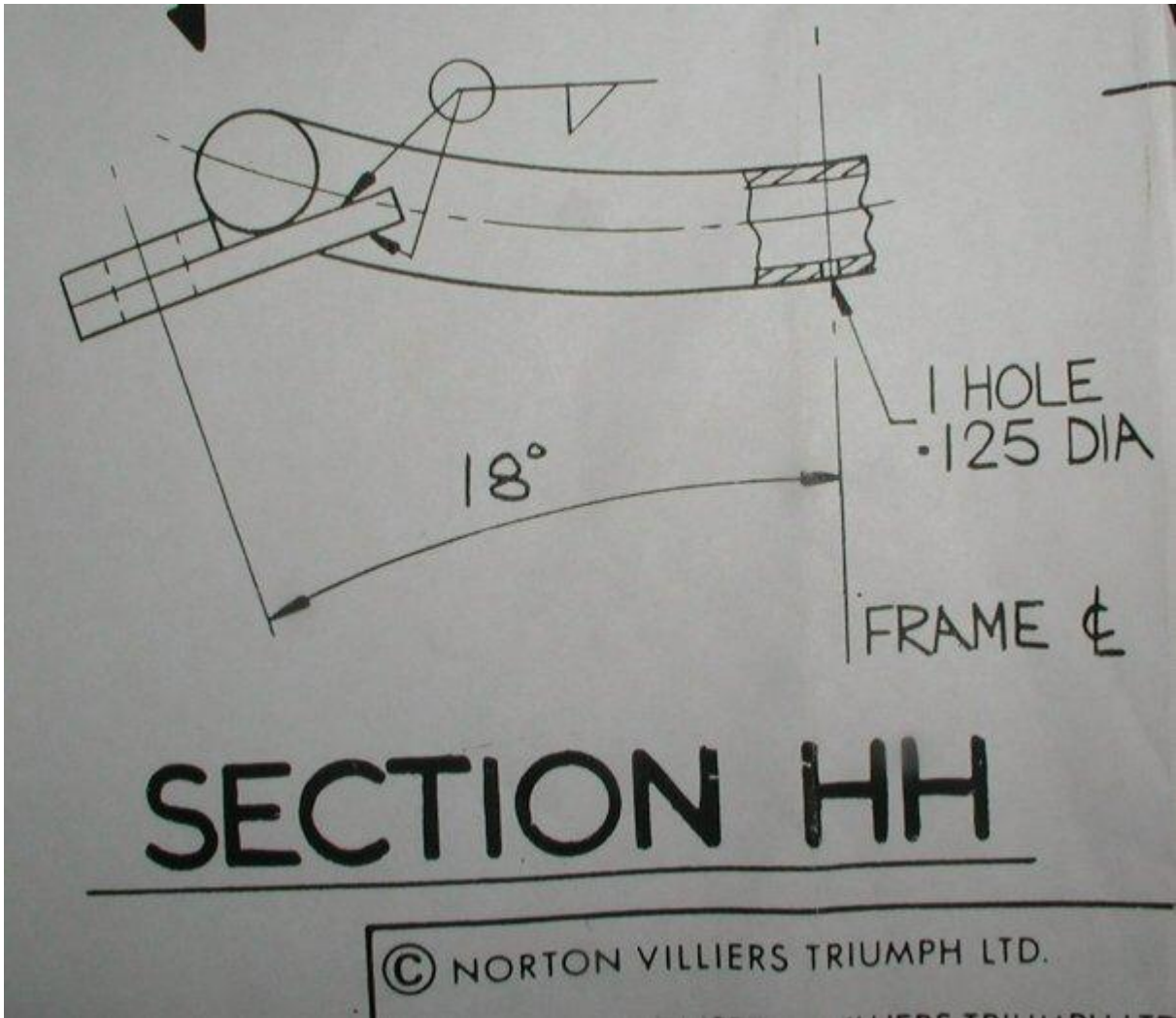
**A picture of the frame with the old bracket removed and the a new bracket to be installed.**



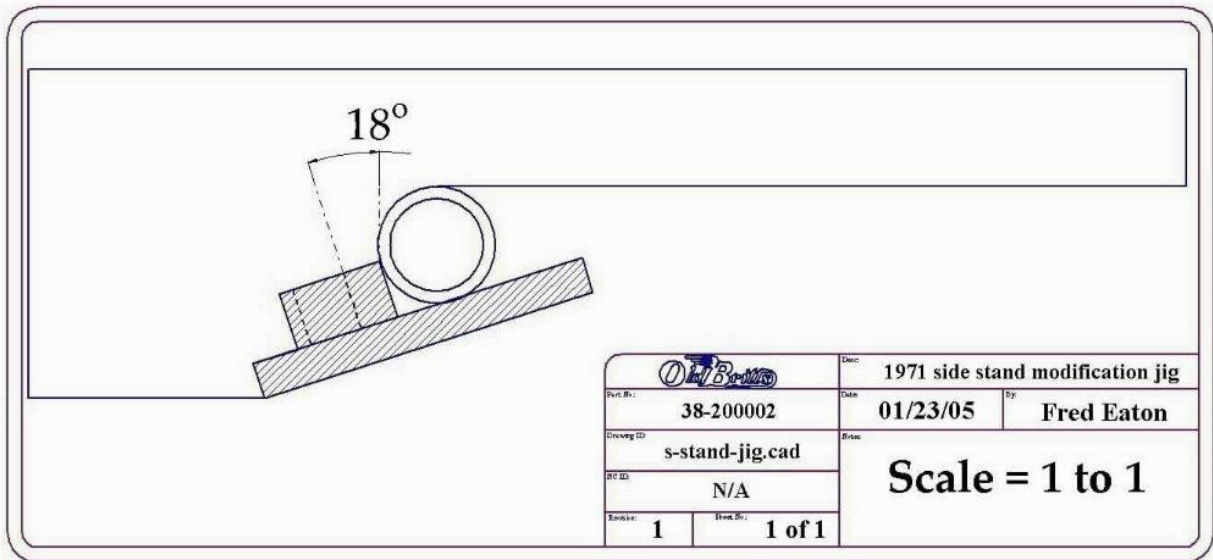


THIS LENGTH OF  
STOP PLATE TO  
BE FREE OF WELD

VIEW ON



I drew up a pattern to make setting the new bracket at the correct angle. This drawing is printed actual size so you can cut out the pattern, tape it to a piece of cardboard or something straight and position the bracket for welding.



**A picture of our pattern drawing that we make available and include with the side stand bracket.**



A picture of the new bracket held to the frame with spring clamps and using our pattern to get the correct placement. A square tube is layed accross both lower frame tubes just above where the new bracket is to be welded.

Please Note: Do not weld the top part of the bracket to the frame in the center. You need to allow room for the nut and washer holding the side stand to fit flush against the top of the bracket. The second picture in this article shows the welds just on the end of the top.